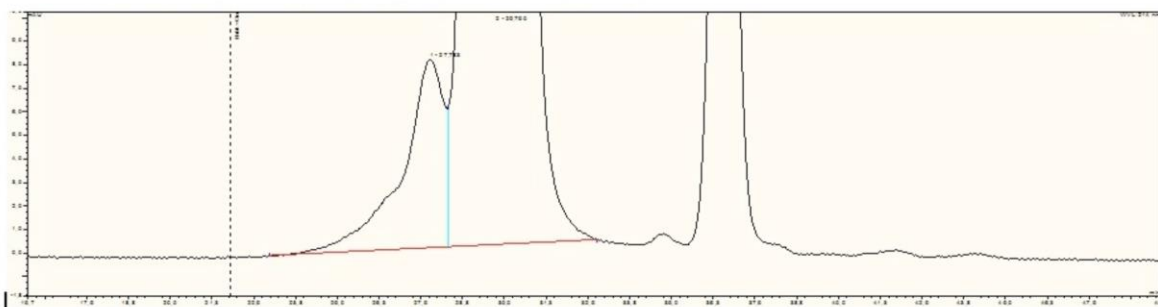
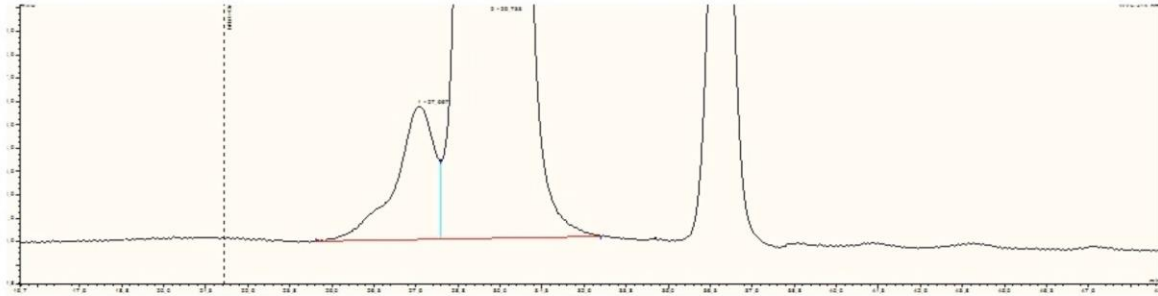
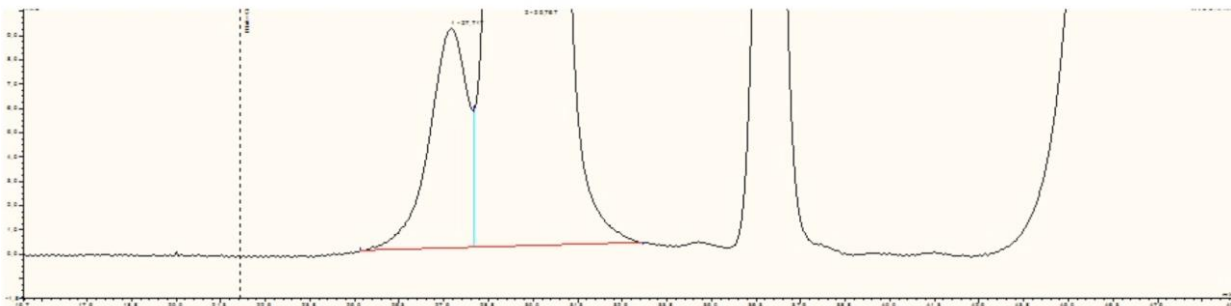


SEC- HPLC (dimers and aggregates)

Wintropin LQ and freeze-dried

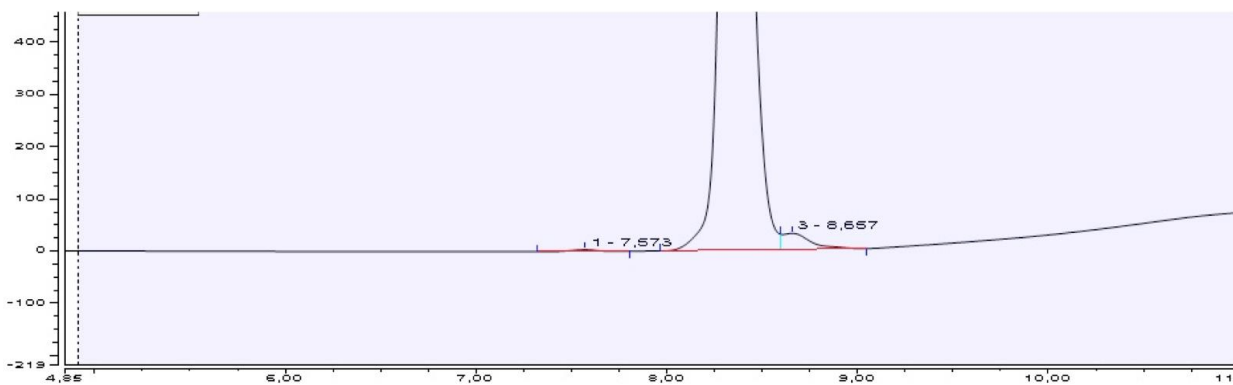


Nanotrop freeze-dried

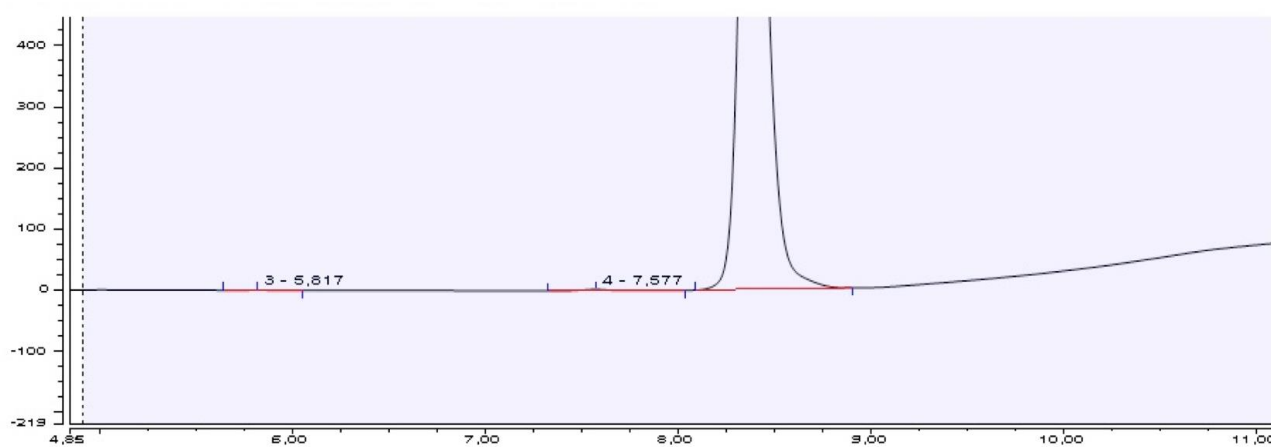
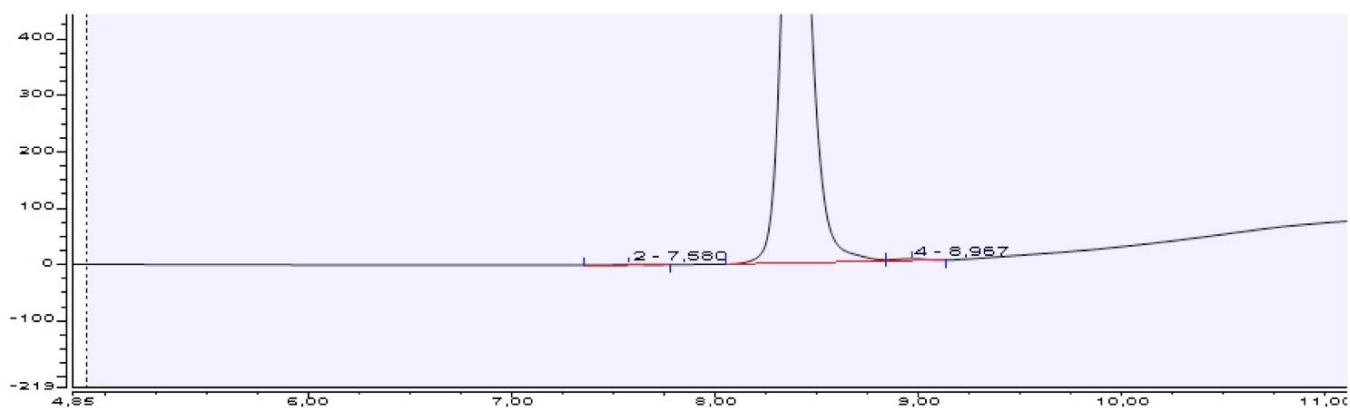


RP-HPLC (related forms of somatotropin)

Nanotrop freeze-dried



Wintropin LQ and freeze-dried



DATA	Concentration mg/ml	Related protein form (monomers) %	Aggregates,%
Wintropin AQ	3,20	97,62	3,24
Wintropin freeze dried	3,36	97,04	3,86
Nanotrop	3,14	97,13	4,12